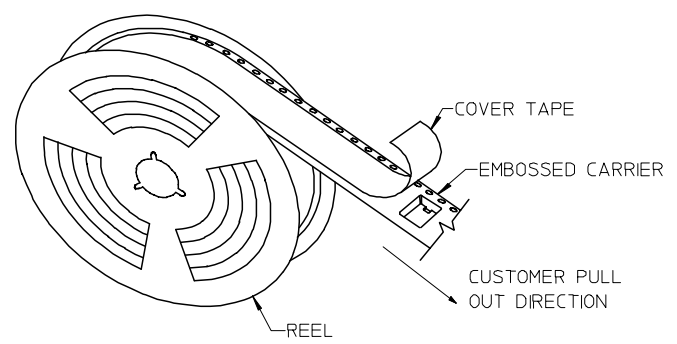
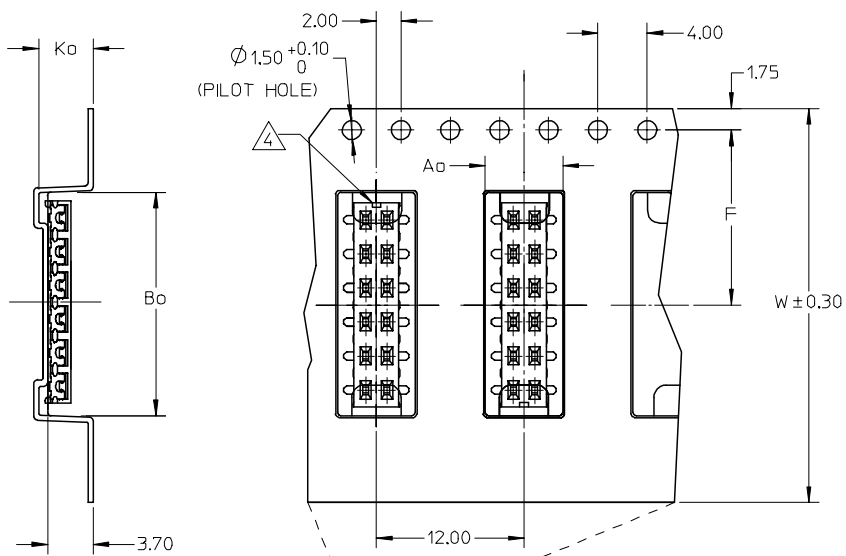


PART NO. IN TUBE	CKT. SIZE	DIM. B	DIM. A
87340-04**	4	2.00	4.00
87340-06**	6	4.00	6.00
87340-08**	8	6.00	8.00
87340-10**	10	8.00	10.00
87340-12**	12	10.00	12.00
87340-14**	14	12.00	14.00
87340-16**	16	14.00	16.00
87340-18**	18	16.00	18.00
87340-20**	20	18.00	20.00

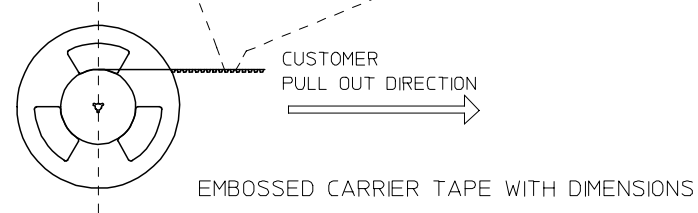
PDR#S-001668-00-00 EC NO: S2008-0262 2007/10/04 DRWNS:KANG CHKD:ATSEE 2007/10/05 APPR:MLONG 2007/10/08	QUALITY SYMBOLS	GENERAL TOLERANCES (UNLESS SPECIFIED)	DIMENSION STYLE	SCALE	DESIGN UNITS	THIRD ANGLE PROJECTION
	▽=0	mm      INCH	MM ONLY	NTS	METRIC	
	∇=0	4 PLACES ± --- ± --- 3 PLACES ± --- ± --- 2 PLACES ± 0.20 ± --- 1 PLACE ± --- ± ---	DRAWN BY JKACHL I DATE 1991/07/02	TITLE	MGRID VLPR II, 2MM DUAL ROW TOP ENTRY RECEPT., SMT	
		ANGULAR ± 3 °	CHECKED BY JNG DATE 1991/07/09	APPROVED BY YTYAP DATE 1991/07/09	MOLEX INCORPORATED	
L1	DESCRIPTION	DRAFT WHERE APPLICABLE MUST REMAIN WITHIN DIMENSIONS	MATERIAL NO.	DOCUMENT NO.	SHEET NO.	
	REV		SEE TABLE	SD-87340-**-01	1 OF 2	

10 9 8 7 6 5 4 3 2 1

PART NO. IN TUBE	PART NO. TAPE/REEL	CKT SIZE	Ao	Bo	F	W	Ko
87340-1014	87340-1019	10	6.70	10.40	11.50	24.00	5.30
87340-1613	87340-1618	16	6.60	16.30	11.50	24.00	4.40
87340-1424	87340-1429	14	6.60	14.40	11.50	24.00	4.40

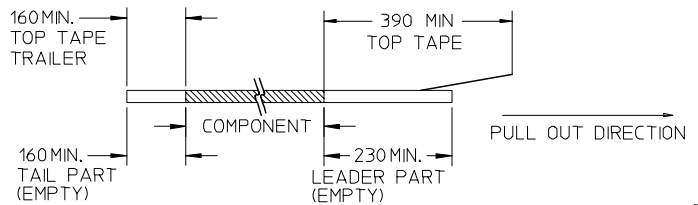


TAPE AND REEL ASSEMBLY SHOWN IS FOR ILLUSTRATION ONLY.

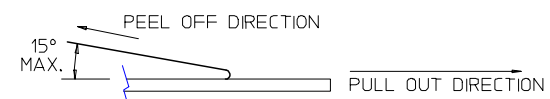


NOTES:

1. LEADER AND TRAILER TAPE



2. PEELING OFF FORCE OF THE TOP TAPE: 20-80gf.  
(PEELING DIRECTION AS SHOWN IN FOLLOWING FIGURE)



3. PACKAGING STANDARD IS AS PER EIA-481.

4. NO FIX ORIENTATION OF ASSEMBLY PART IN T&R.

5. TAPE & REEL QUANTITY : 1000 PCS / REEL

PDR#S-001668-00-00	2007/10/04	DRWNS:KANG	2007/10/05	CHKD:ATSEE	2007/10/08	APPR:MLONG
EC NO: S2008-0262						
L1	REV	DESCRIPTION	QUALITY SYMBOLS			

QUALITY SYMBOLS	GENERAL TOLERANCES (UNLESS SPECIFIED)	DIMENSION STYLE	SCALE	DESIGN UNITS	THIRD ANGLE PROJECTION
▽=0	mm INCH	MM ONLY	NTS	METRIC	
▽=0	4 PLACES ± --- ± ---	DRAWN BY	DATE	TITLE	
	3 PLACES ± --- ± ---	JKACHL I	1991/07/02	MGRID	
	2 PLACES ± 0.20 ± ---	CHECKED BY	DATE	VLPR II, 2MM DUAL ROW	
	1 PLACE ± --- ± ---	JNG	1991/07/09	TOP ENTRY RECEPT., SMT	
	ANGULAR ± 3 °	APPROVED BY	DATE	MOLEX INCORPORATED	
		YTYAP	1991/07/09	MOLEX INCORPORATED	
		MATERIAL NO.	DOCUMENT NO.	SHEET NO.	
		SEE TABLE	SD-87340-**01	2 OF 2	

DRAFT WHERE APPLICABLE MUST REMAIN WITHIN DIMENSIONS		SIZE A3		THIS DRAWING CONTAINS INFORMATION THAT IS PROPRIETARY TO MOLEX INCORPORATED AND SHOULD NOT BE USED WITHOUT WRITTEN PERMISSION	
--	--	---------	--	---	--

9 8 7 6 5 4 3 2 1